

TRAX

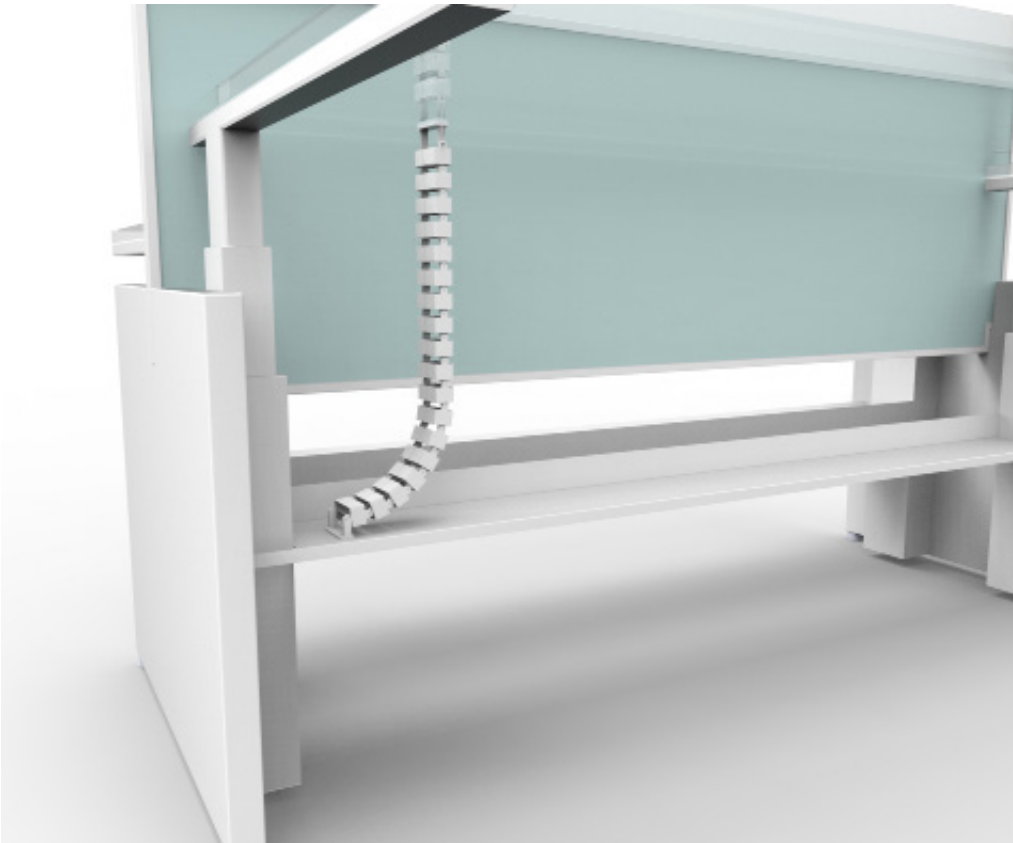
Umbilical - Height Adjustable Cable Management



TRAX

Umbilical - Height Adjustable Cable Management

CMS Trax umbilical is specifically designed for cable protection when bringing power and data cables in a height adjustable table application. Trax features either single or dual compartment for cable distribution allowing power and data cabling to be run separate or simultaneously when using conduit.



Colours Available

-  Black
-  White

Key Features

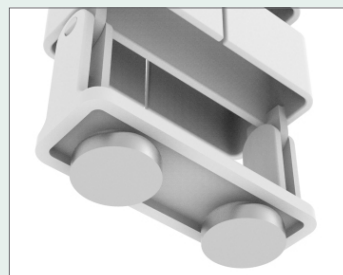
- » Trax is designed for height adjustable workstations
- » Fitted with brackets to connect to the underside of the desk and back to the fixed cable tray below.
- » A magnet set can fit the cable-tray bracket (sold separately)



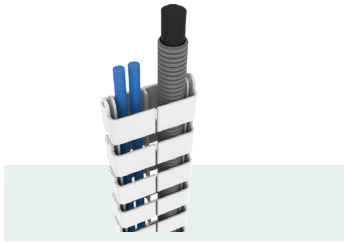
Single compartment (TRS60)



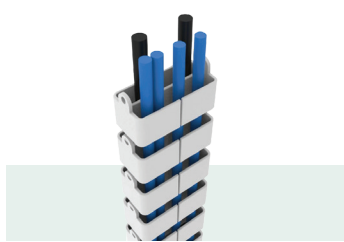
Dual compartment (TRD60)



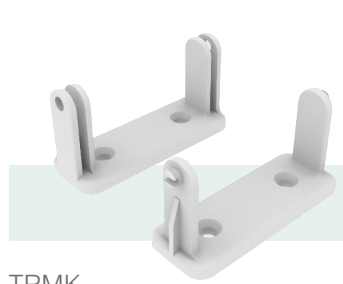
Magnet set (TRMGK)



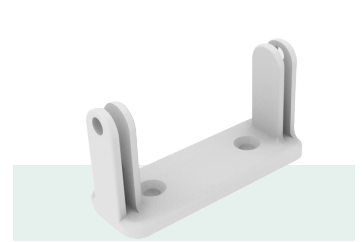
TRS60
Trax single compartment 600mm



TRD60
Trax dual compartment 600mm



TRMK
Mounting kit



TRD
Under-desk mounting bracket



TRB
Mounting bracket.



TRMGK
Magnet set for mounting
base fixing.

Product Specifications

Pre configured kits

TRSH12**	1 x Trax single compartment umbilical kit - 1.2m 1 x Cable tray base fixing (TRB) 1 x Under-desk bracket (TRD)
TRDH12**	1 x Trax dual compartment umbilical kit - 1.2m 1 x Cable tray base fixing (TRB) 1 x Under-desk bracket (TRD)
TRDH12**-5	5 x Trax dual compartment umbilical kit - 1.2m 5 x Cable tray base fixing (TRB) 5 x Under-desk bracket (TRD)

Accessories

TRS60**	Trax single compartment 600mm
TRD60**	Trax dual compartment 600mm
TRMK**	Trax series mounting kit - under-desk bracket and cable tray base fixing
TRD**	Trax under-desk mounting bracket only
TRB**	Trax cable tray mounting bracket only
TRMGK	Trax series magnet set for mounting base fixing

NOTE:

** Umbilical colour: black (BK), white (WT)

TRMGK will only fix to steel surfaces



Customised options available

For more information please contact your CMS sales representative

Disclaimer: CMS has made every attempt to ensure the accuracy and reliability of the information provided in this document are correct. All information contained in this document is to be used for general guidance only. CMS reserves the right to change, delete or modify the information without notice.
© CMS Electracom 2023