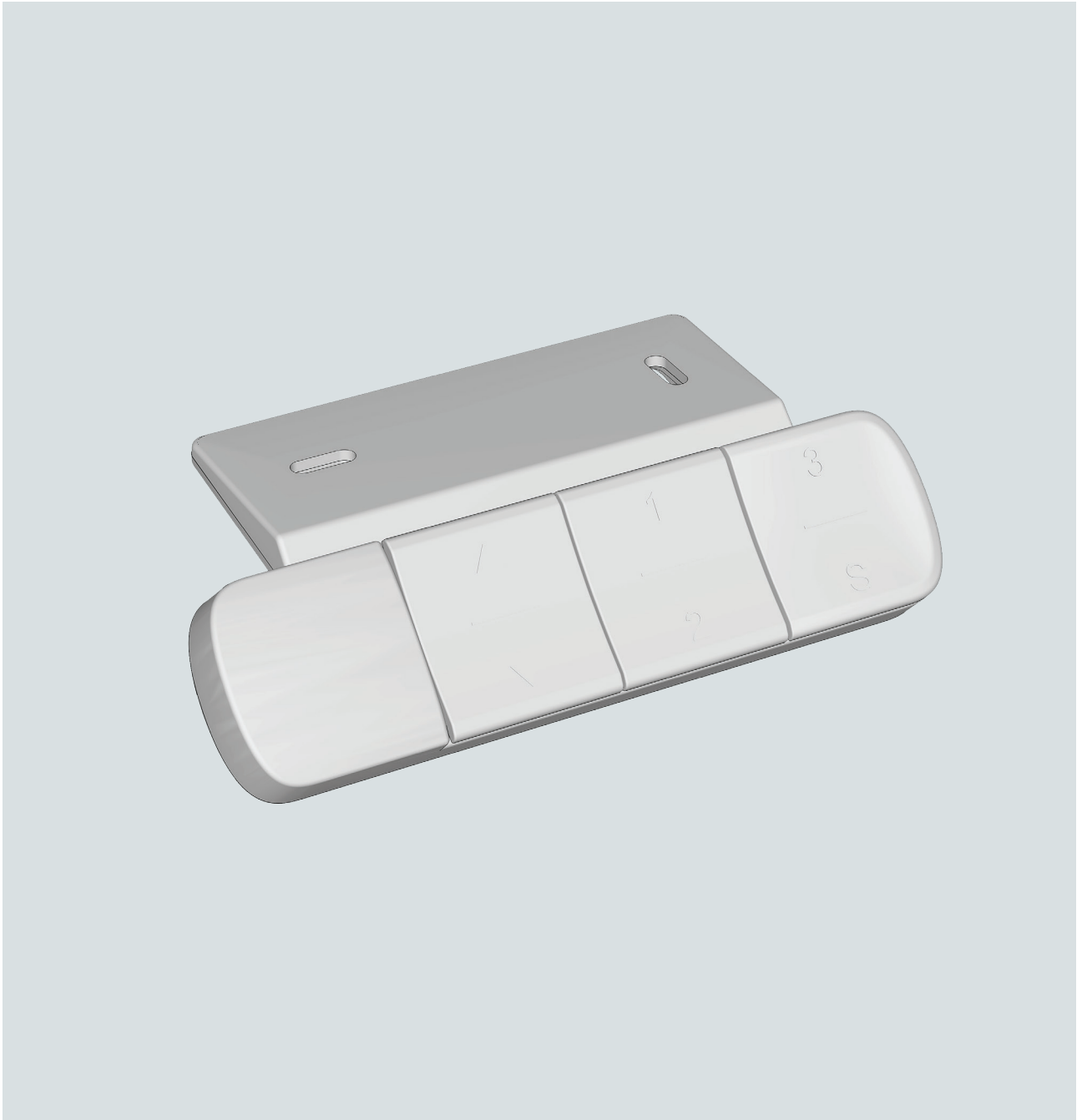


Haven Handset - SSD/DSD

Operational Guide

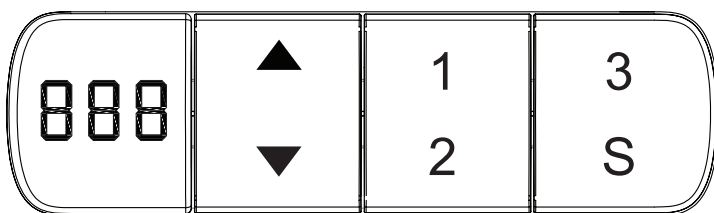


Need a hand?

Contact us at info@knightgroup.co.nz or 0800 143 143 for assistance.

knightgroup.co.nz

Handset must be 'manually reset' following the initial installation and any 'power-off' event.



Manual Reset



Step 1: Hold the "Down" key until the display alternates to show "rst," then release the key.



Step 2: Hold the "Down" key again. The desktop will slowly move downward and then return to its original position until the display shows "60". Please note it may display in imperial units, such as "23.6".

Step 3: Release the key, and the height-adjustable desk will be ready for normal use.

Note: The 'anti-collision' function is disabled during all resets. Be cautious of potential pinching hazards, and ensure there are no obstacles in the desk's path.

Up and Down



Step 1: Hold the "Up" key until the desired standing height is reached.



Step 2: Hold the "Down" key until the desired sitting height is reached.

Saving Memory Positions



Step 1: Adjust the desktop to your desired height using the "Up" or "Down" keys.



Step 2: Press and hold the S key until the display shows "S--"



Step 3: Press the "1" key. The display will change to "S-1". Wait for 5 seconds, and the display will revert to showing the current height. The memory position has now been saved.







To save additional memory positions:

Follow the same steps, pressing the "2" key for "S-2" or the "3" key for "S-3"

Using the memory function allows you to quickly program and recall your preferred height positions for added convenience.

Function Options

Do not enable this function unless it is absolutely necessary for a specific situation.

-   **Step 1:** Press and hold the "S" key until the display shows "U-1" and starts flashing.
-  **Step 2:** Press the "S" key again to navigate through the available functional options.
-   **Step 3:** Use the "Up" or "Down" keys to select the desired value for the chosen option.
-  **Step 4:** To save your settings, press and hold the "S" key for 5 seconds. If the save is successful, the display will return to showing the current height.

Note: If no action is taken for 10 seconds, the system will automatically exit the menu. This process allows for customisation of functional settings to suit your requirements.

Function Option	Display	Operation
Change the Displayed Unit (cm/inch)	U-1	"U-0" is the metric "CM"; "U-1" is the Imperial "IN".
Anti-Collision Sensitivity of Upward Current Detection	PC3	Range of regulation: PC0-PC5; Step size: 1; "0" disables the Anti-Collision function; the smaller the number, the lower the sensitivity.
Anti-Collision Sensitivity of Downward Current Detection	DC3	Range of regulation: dC0-dC5; Step size: 1; "0" disables the Anti-Collision function; the smaller the number, the lower the sensitivity.
Low Limitation Positions	23.6/60.0	Range of regulation: 23.6-49.2/60-125; Step size: 0.2 inch/5 mm; The setting value should be at least 4 inch/10 cm smaller than the maximum height setting value. Note: If Imperial "IN" display mode, the inch height will be displayed. The step size is 0.2 inch.
High Limitation Positions	49.2/125	Range of regulation: 23.6-49.2/60-125; Step size: 0.2 inch/5 mm; The setting value should be at least 4 inch/10 cm larger than the minimum height setting value. Note: If Imperial "IN" display mode, the inch height will be displayed. The step size is 0.2 inch.
Table Thickness	00.0	Range of regulation: 0-30 cm; Step size: 0.1 cm; After setting the table thickness, the display height value is added to the table thickness value. Note: If Imperial "IN" display mode, the inch height will be displayed. The step size is 0.2 inch.

Reset to Factory Setting



Step 1: Press and hold the "S" key until the display shows "U-I" and starts flashing.



Step 2: Press the "S" key once more to select the "FAC" option.



Step 3: Hold the "S" key for 5 seconds to save. If the save is successful, the display will show a progress bar "11111111" followed by "SUS." Afterward, the display will return to show the current height.

This process restores the control unit to its factory settings, including resetting memory positions, height limits, and other settings.

Energy Saving Mode

If no operation is performed within 15 seconds, the energy-saving mode will activate. The manual display will turn off, and the controller will enter a low-power consumption mode. To exit energy-saving mode, simply press any key.

Troubleshooting

Code	Information	Operating
E00	Abnormal power supply voltage (below 24V or above 35V)	Replace the power supply.
E-2	Anti-collision function activated	Remove the obstacle; operation can resume normally.
H0T	Continuous operation for over 2 minutes without resting	Allow the system to rest for approximately 18 minutes before resuming operation.
E-3	Motor cable is disconnected	Check and ensure all motor cables are securely connected.
E-4	Uneven leg height (difference exceeds 20mm)	Stop operation and perform a manual reset as per the user manual.
OVER	Motor stalling or overloaded (exceeding 1330N/136kg/300lbs)	Reduce the load on the desk and try again.
E22	Power supply voltage is below 17V	Reduce the load causing the voltage drop, and perform a manual reset as per the user manual.

Technical Data

Input Voltage:	100~240V AC
Output Voltage:	29V DC
Max Loading:	1330N / 136KG / 300LBS
Height Range:	Without Desktop 605-1255mm With Desktop 630-1280mm
Duty Cycle:	2 min on/ 18 min off