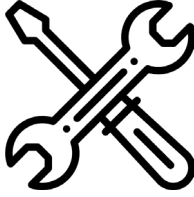




# DUO II ELECTRIC SINGLE DESK **ASSEMBLY AND INSTRUCTION GUIDE**



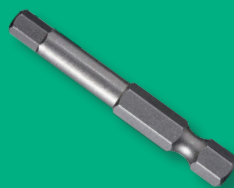
# TABLE OF CONTENTS

Assembly Instructions	3-6	
User Instructions	7-13	
Care and Maintenance	14	

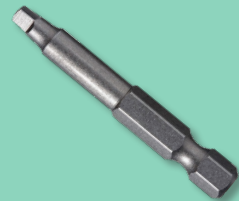
## Tools Required



Battery Drill



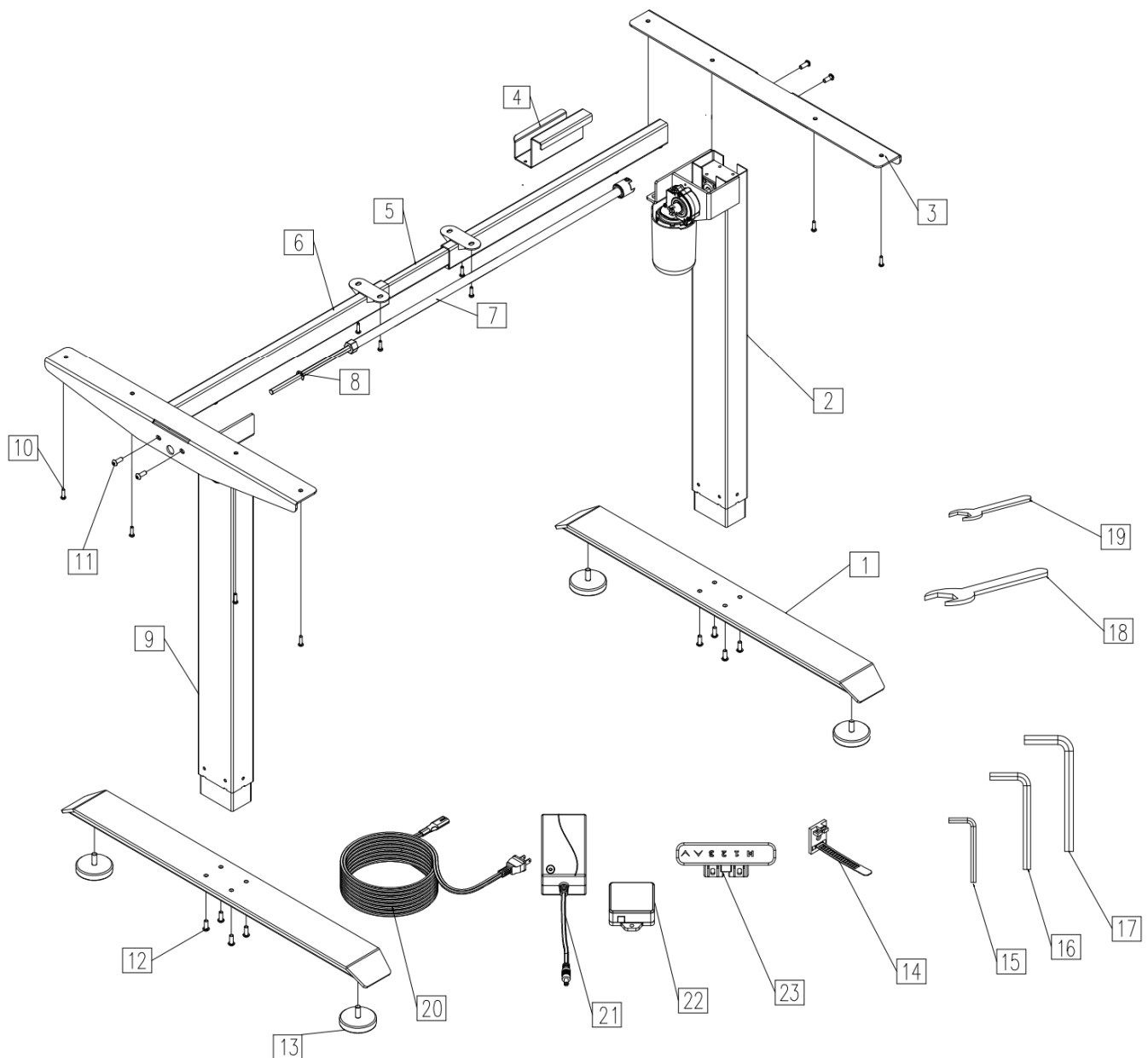
4mm Hex Bit



#2 Square Drive Bit

# DUO II ELECTRIC SINGLE DESK

## A. ASSEMBLY DIAGRAM



## B. PACKING LIST

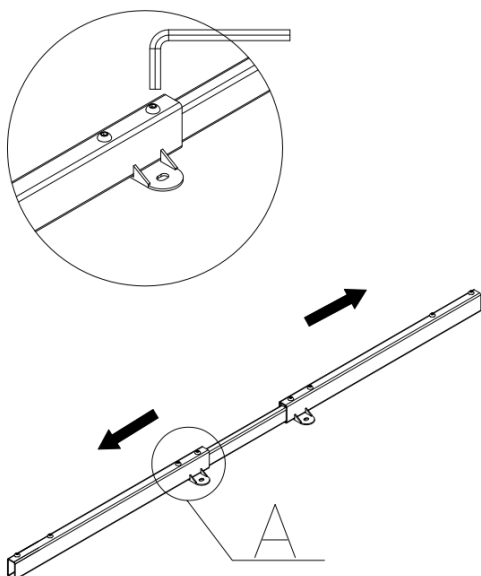
NO.	HARDWARE SECTION	QUANTITY
1	Foot	2pcs
2	Lifting Column (Motor)	1pc
3	Upper Side Support	2pcs
4	Steel Hanger	1pc
5	Extendable Tube	1pc
6	Framework	2pcs
7	Transmission Tube	1pc
8	Hex Bar	1pc
9	Lifting Column	1pc

	ACCESSORY PACKAGE	QUANTITY
10	Screw ST6x23	15pcs
11	Bolt M6x10	5pcs
12	Bolt M6x16	8pcs
13	Glide	4pcs
14	Cable Ties	2pcs
15	Hex Wrench-(2mm)	1pc
16	Hex Wrench-(4mm)	1pc
17	Hex Wrench-(8mm)	1pc
18	Spanner - I (8mm)	1pc
19	Spanner - II (18mm)	1pc

	CONTROL SECTION	QUANTITY
20	Power Cord	1pc
21	AC Adaptor	1pc
22	Control Box	1pc
23	Handset	1pc

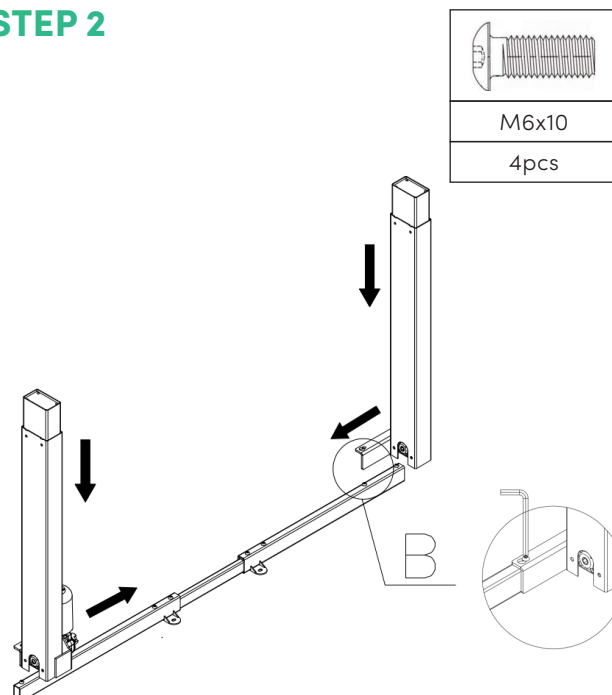
## C. HOW TO INSTALL THE DESK

### STEP 1



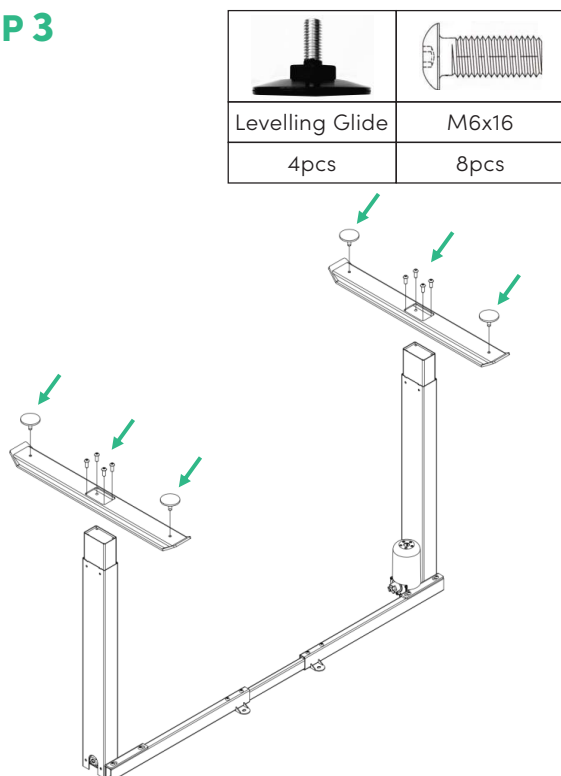
Take out the framework, release the M6x10 bolt with 4MM hex wrench.

### STEP 2



Install the lifting column, insert the screw into the keyhole of the lifting column and pull to one side, then fasten the M6x10 with a 4mm hex wrench.

### STEP 3

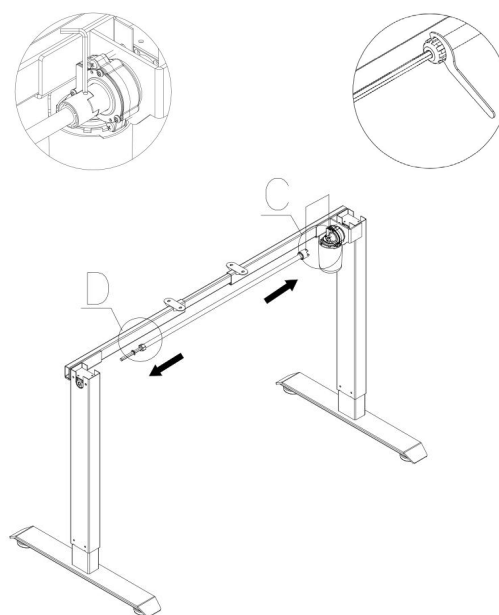


Install foot and levelling glides.

### STEP 4

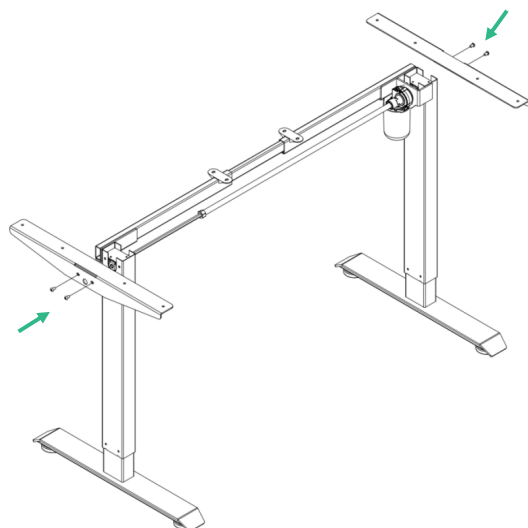
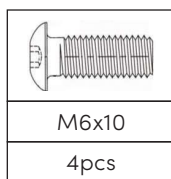
**C STEP: 2.5 mm WRENCH**

**D STEP: Spanner**



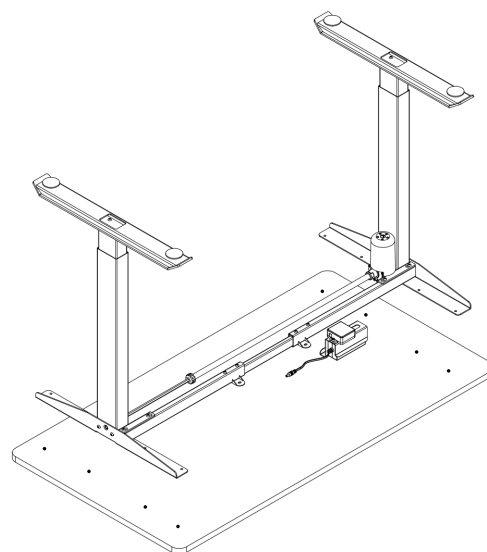
Insert hex bar and transmission tube with the help of spanner, and 2.5mm hex wrench.

## STEP 5



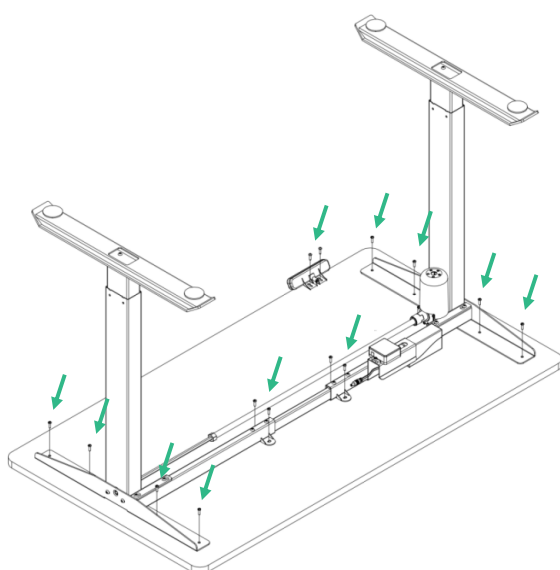
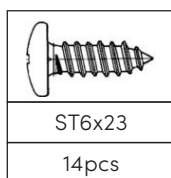
Install upper side support.

## STEP 6



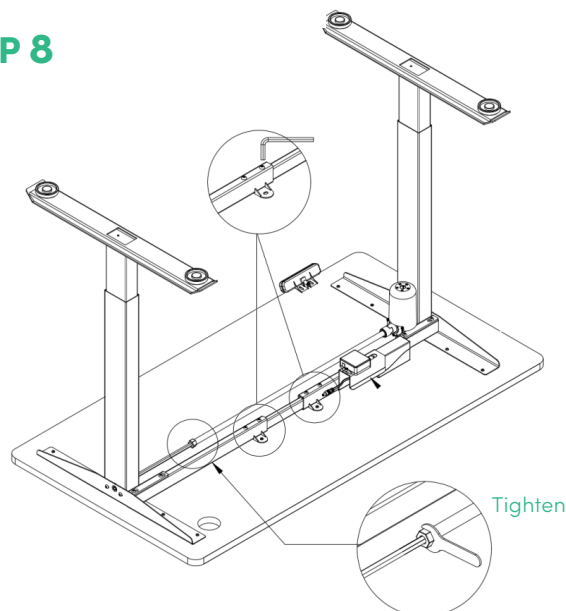
Our control box and AC adaptor are pre-fixed to the bracket, hang the bracket to frame and put on desktop.

## STEP 7



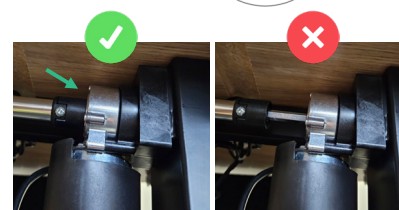
Install the desktop and handset.

## STEP 8



Tighten

Check the Transmission tube is connected to both legs.



Tighten the bolt x4 (M6x10) and transmission tube.

Refer to page 9 on how to connect all the cords.