

BALANCE

DESK



WHY BALANCE?

The Balance desk provides a combination of functionality and flexibility. A simple kit of parts, with extendable desk beams, makes installation and reconfiguration easy; allowing for any desking configuration.



Single Desk



Inline 2 Pod Desk



Inline 3 Pod Desk



Inline 4 Pod Desk



2 Pod Back-To-Back Desk



4 Pod Back-To-Back Desk



6 Pod Back-To-Back Desk



8 Pod Back-To-Back Desk



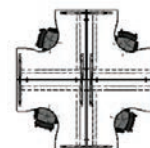
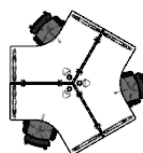
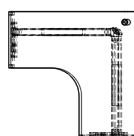
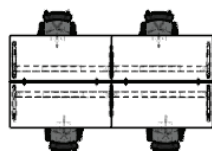
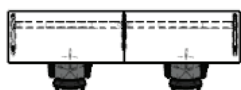
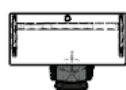
90° Corner Workstation Desk



90° 4 Pod Desk



120° 3 Pod Desk





SPECIFICATIONS:

- Minimum desk top size: 950 x 700mm, Maximum desk top size: 2200 x 800mm
- Steel frame powder coated black or white
- Legs available in 700, 800, 1400 and 1600mmD
- Fixed height at 720mm
- Cable port or cable scallop depending on configuration
- Built in cable tray
- Single desks or pod configurations
- Fast lead time for standard finishes